

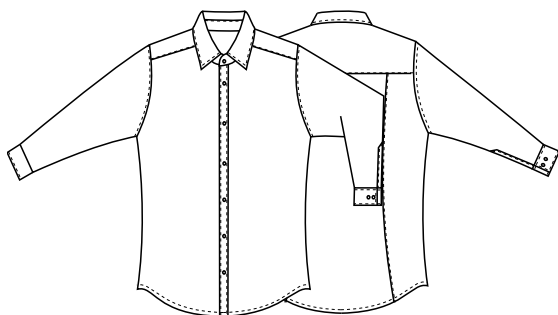
DETTAGLI

- Collo classico
- Polsino regolabile

TAGLIE

XS ÷ 5XL
Slim Fit

76,5 cm



TESSUTO

65% poliestere
35% cotone
110 g / m²

COLORE

C01 Bianco

COLORE

U32 Nero



Le misure indicate si riferiscono alle taglie **S** per i capi femminili, **L** per i capi maschili. Per i capi a taglia unica le misure indicate sono effettive.

Camicia uomo facile stiro.

COLORI DISPONIBILI

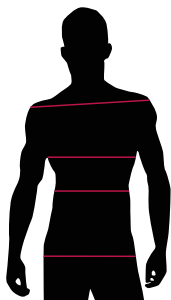


C01 Bianco



U32 Nero

TABELLE TAGLIE
E CORRISPONDENZE



1
2
3
4

TABELLA ST-N1 SLIM FIT									
TAGLIA	XS	S	M	L	XL	XXL	XXXL	4XL	5XL
1 - SPALLE									
2 - CIRCONFERENZA TORACE	90-94	95-98	99-102	103-106	107-112	113-120	121-128	129-136	137-147
3 - CIRCONFERENZA VITA	81-85	86-89	90-93	94-97	98-104	105-114	115-124	125-134	135-145
4 - CIRCONFERENZA BACINO	93-97	98-101	102-105	106-109	110-115	116-123	124-131	132-139	140-150

GUIDA ALLE TAGLIE **1)** Prendere le misure anatomiche (corpo con abbigliamento intimo) senza stringere mantenendo ben teso il metro. **Nota:** nel caso vogliate indossare dei camici già con dell'abbigliamento sotto prendete le misure già abbigliati. **2)** Nel caso tra le misure prese vi fosse una misura a cavallo fra 2 taglie vi consigliamo di prendere quella più grande. **3)** Le misure della tabella sono espresse in centimetri.

PRINCE

ITEM CODE

COD. Q1NX0166

11P01056

Giblor's
italian work/life specialist

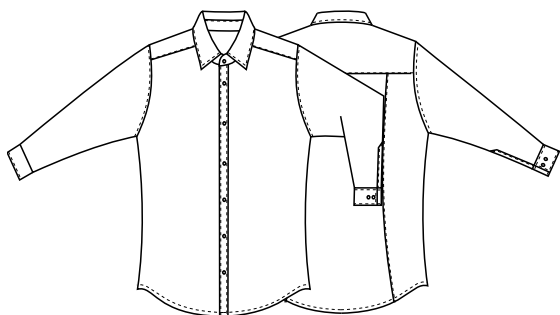
DETAILS

- Classic collar
- Adjustable cuff

SIZES

XS ÷ 5XL
Slim Fit

76,5 cm



FABRIC

65% polyester
35% cotton
110 g / m²

COLOURS

C01 White

COLOURS

U32 Black



The measures indicated refer to sizes **S** for women, **L** for men. For one-size-fits-all garments, the measurements indicated are effective.

Easy iron shirt.

AVAILABLE COLOURS



C01 White



U32 Black

SIZE TABLES
AND CORRESPONDENCES

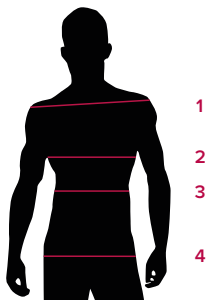


TABLE ST-N1 SLIM FIT		XS	S	M	L	XL	XXL	XXXL	4XL	5XL
SIZE										
1 - SHOULDERS										
2 - CHEST		90-94	95-98	99-102	103-106	107-112	113-120	121-128	129-136	137-147
3 - WAIST		81-85	86-89	90-93	94-97	98-104	105-114	115-124	125-134	135-145
4 - HIPS		93-97	98-101	102-105	106-109	110-115	116-123	124-131	132-139	140-150

SIZE GUIDE **1)** Take the anatomical measurements (body with underwear) without tightening, keeping the measuring tape taut. Note: in case you want to wear of the gowns already with the clothing underneath take the measurements already dressed. **2)** If there is a measure between 2 sizes between the measurements taken, we advise you to take the bigger one. **3)** The measurements in the table are expressed in centimeters.